



# M MOUNTAIN

DECEMBER 2020

## TOP NEWS INSIDE

- 2020 HIGHLIGHTS - 02
- 2020 CONTINUED - 03
- CONTEST PAGE - 04

## ENTER TO WIN!!!!

### 55" SMART TV



## 2020 REVIEW

It was a year full of surprises & adjusting to new normals. We are grateful for the people and projects that made 2020 a year to remember.





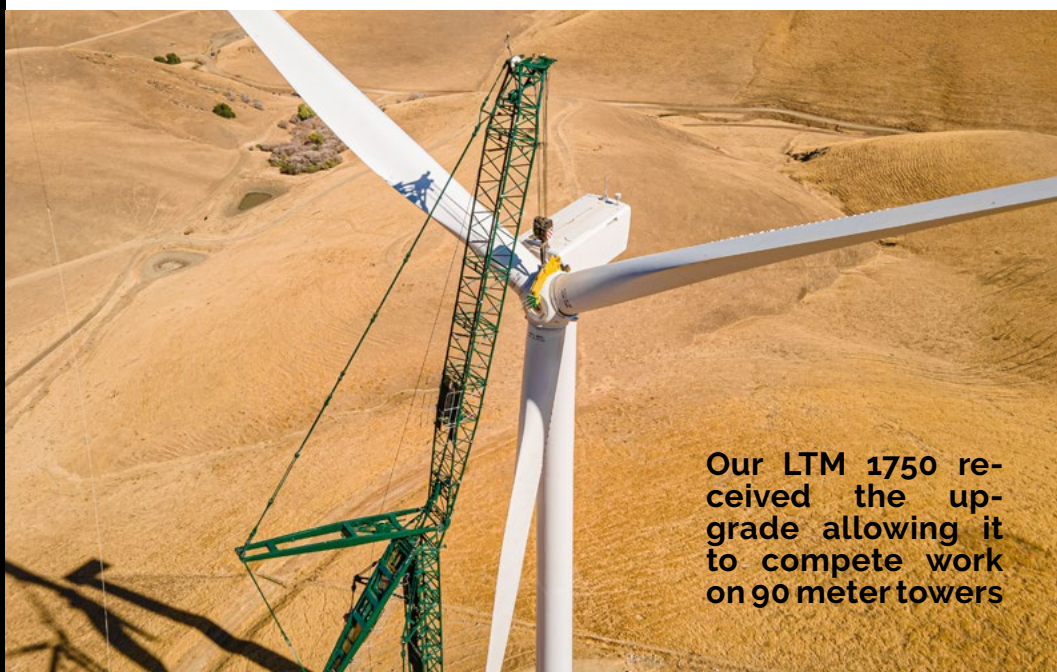
Mountain has the only FTV 500 blade movers in the U.S.



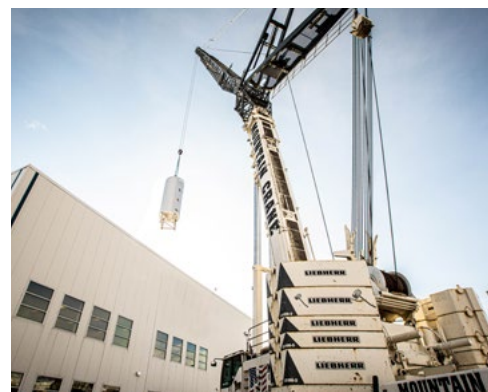
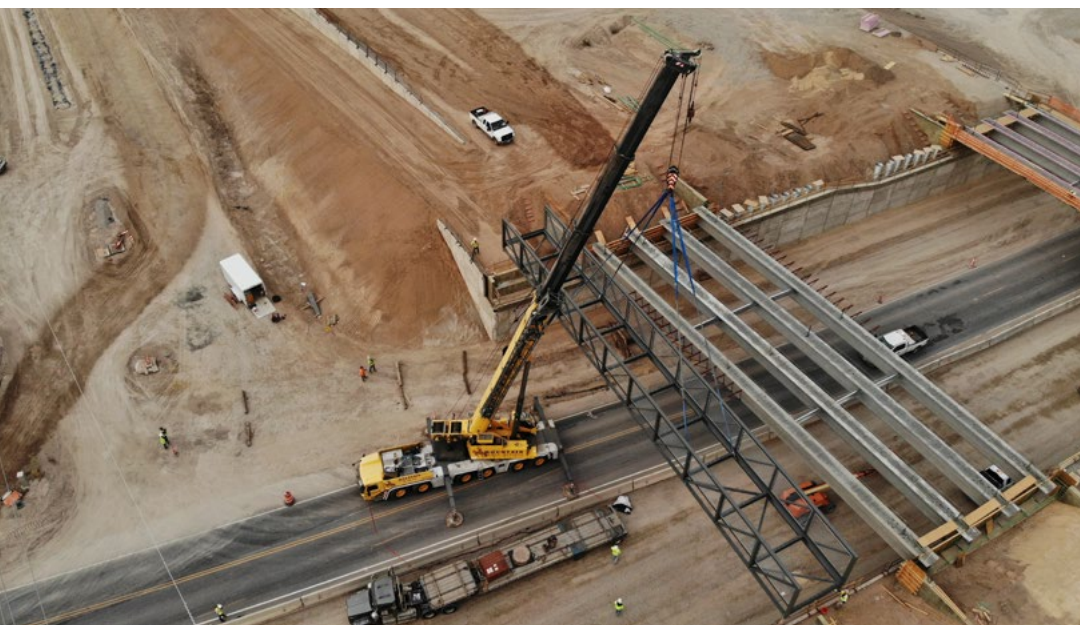
The Ridgeline Wind project was a once in a lifetime experience for our team. Safely transporting all components and building wind turbines on the side of the mountain?!... We did it, and it's something we are extremely proud of.

## 2020 A YEAR OF GROWTH

The projects in 2020 brought exciting challenges and opportunities for growth. Our ever expanding fleet allowed us to reach new heights quite literally!



Our LTM 1750 received the upgrade allowing it to compete work on 90 meter towers



Girders, tilt ups, refineries, hanging steel, & everything in-between! We love the uniqueness of each and every project.



# 2020 CONTINUED



We are incredibly grateful for our team. From the office staff to everyone in the field who worked hard and made the necessary adjustments to ensure that 2020 was a success.



*"The Mountain safety culture has shined in 2020. Safety culture consists of many components including education, training and proactive rather than reactive problem solving... Ultimately safety culture is determined by each team member's individual commitment to the well-being of themselves and others. The constant effort shown by the entire team this year has been outstanding"*

*-Todd Chapman, Mountain Safety Director*



# MOUNTAIN STRONG



The core of Mountain is a top notch crew who is committed to SAFETY and executing every job with professionalism and precision. We are proud to be Mountain strong.





## DECEMBER CONTEST:

### 55" Smart TV



**CLICK HERE TO WIN!**

## CONTACT US

-  393 S Monterey St. Salt Lake City, UT 84104
-  [www.mountaincrane.com](http://www.mountaincrane.com)
-  [@mountaincrane](https://www.instagram.com/mountaincrane)
-  801.282.3330

# M MOUNTAIN