

## In This Issue:

# Olympic Cauldron

+ 02

+ Flying in the City: 04

+ Contest Page: 05

## THE FLEET KEEPS GROWING!



We are proud to welcome two more LR 1300s and a LR 1800 to the fleet!

+ 03

## ENTER TO WIN

LTM 1750 Model Crane



+ 04





# BRINGING BACK THE CAULDRON



"It's always an honor to be brought on for high profile jobs like this one. Working with the professionals at SME and Layton is a pleasure. This structure is important to the local community. It's exciting to see our team play a part in bringing the cauldron back." -Skyler Mundy



Grateful for our skilled team

The Olympic Cauldron at the University of Utah Stadium was first lit in the Opening Ceremonies of the 2002 Winter Olympics hosted in Salt Lake City, UT. It's light shone brightly over the valley for the duration of the games. In 2019, the expansion of the stadium required that the cauldron be moved to a new location. Last February, our team removed the structure and it was hauled to a se-

cure location where it could be refurbished. Now, just shy of a year later, it was time to return to the cauldron to its home. With our 350 ton and 115 ton cranes working in tandem, our crew placed the 32K pound structure on a 17 foot pedestal. Surrounded by local media, crews from Mountain, SME, and Layton executed the project safely and securely.



# Tripping & Setting the Olympic Torch



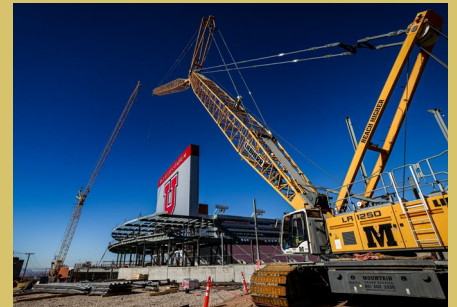
**Our Partners:** SME Steel and Layton Construction.

**72'** Tall   **32k** Pounds   **350** Ton AT Crane   **115** Ton AT Crane

## U OF U STADIUM EXPANSION

Rice Eccles Stadium is receiving a big face lift! Construction began in late 2019. Demolition of the South end zone and removal of the cauldron made way for a new end zone and a total of 51,000 seats. Mountain has been on site for a significant portion of the project with our LR1250 and LR1160 crawler cranes hanging steel for the new end zone.

The project is expected to be complete for the 2021 football season.



We are incredibly proud of all those involved in the success of this project.

# Flying a Chiller In The City

Working with the professionals at Archer Mechanical, our Liebherr LTM1400 removed an old chiller and hoisted a new chiller weighing in at 13,000 lbs. Our 500 ton crane was in superlift with 92 ft. of jib to make the reach over the 190 ft. high building. It was a tight squeeze, but a skilled team and the right equipment made this job a success.



## Dick Stam Dec 26, 1925 - Feb 16, 2021

### "Utah's First Crane Operator"

We offer our heartfelt condolences to Lon Stam & the entire Stam family at the passing of their father. Dick is a legend in the crane industry. Some of his projects included the Salt Palace, Temple Square Annex, the Control tower at the SLC Airport & The Cathedral of the Madeline. It was once reported he was the "Best crane operator this side of the Mississippi River". Dick was extremely proud to report he never had any kind of accident.

Thank you for paving the way Dick. You will be missed.



## Now Hiring!

Come join our amazing team!  
We are currently hiring for CDL Drivers  
and a Lead Inspector

Email questions or your resume to:  
[media@mountaincrane.com](mailto:media@mountaincrane.com)





The core of Mountain is a top notch crew who is committed to SAFETY and executing every job with professionalism and precision. We are proud to be Mountain strong.



## Click to Win!

### February Contest

⊕ LTM 1750 Model Crane

## CONTACT US



393 S Monterey St.  
Salt Lake City, UT 84104



[www.mountaincrane.com](http://www.mountaincrane.com)



@mountaincrane



801.282.3330

