

M **MOUNTAIN**

NEWSLETTER

NOVEMBER 2019

TOP NEWS INSIDE

- **Texas- 02**
- **Tilt Up - 03**
- **Missile Launcher - 03**
- **CONTEST PAGE - 04**

ENTER TO WIN!!!!

2 COURTSIDE TICKETS



DEEP IN THE HEART OF TEXAS



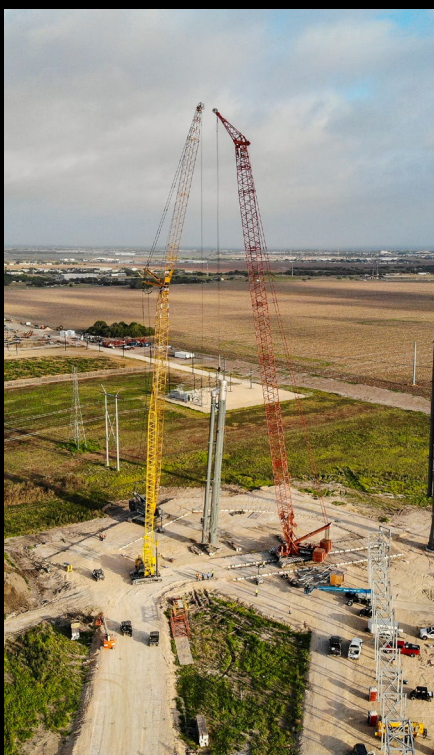
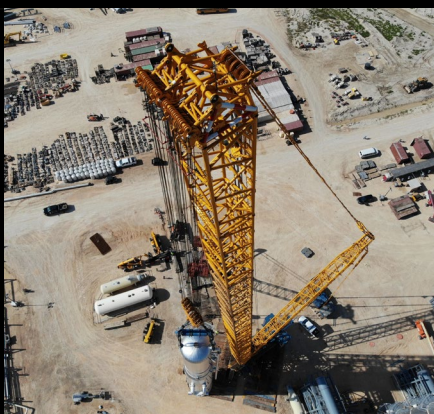
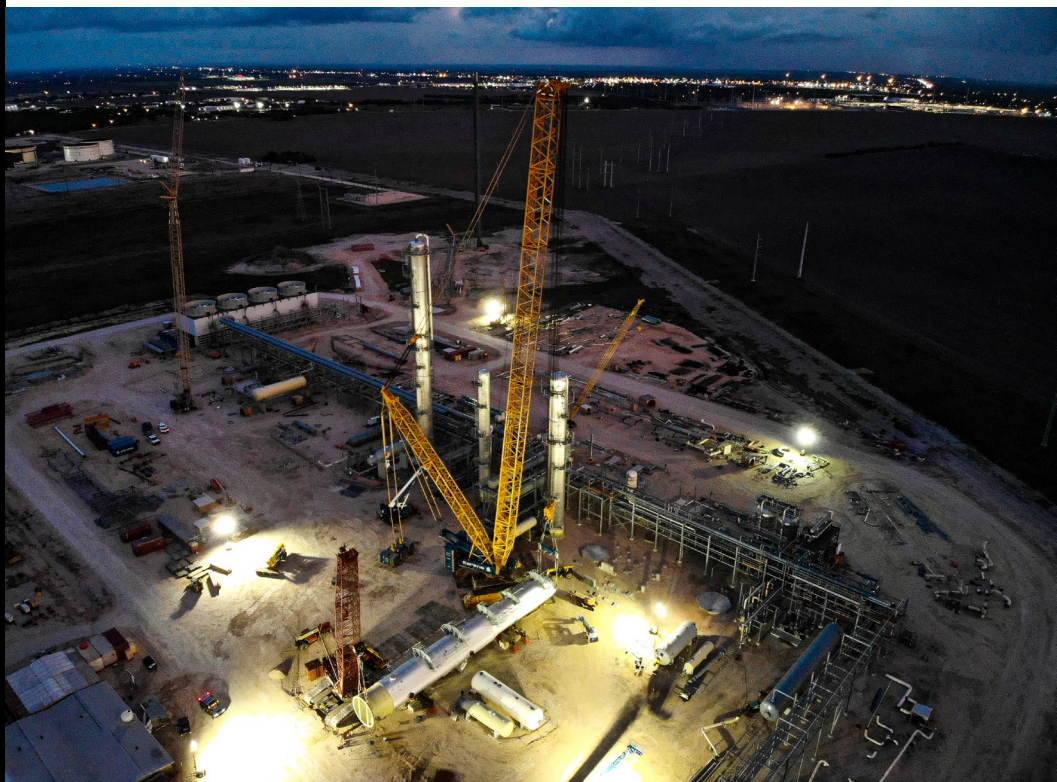
Over four million pounds lifted in under two weeks in three different cities in Texas. ✓ Done!



We express our sincere gratitude to all Veterans & their families for their selfless sacrifice



EVERYTHING IS BIGGER IN TEXAS!



When duty calls, Mountain Crane is ready to work! Our crews recently lifted over 4 million pounds in less than two weeks. In a series of lifts spanning 3 different project sites, our crews delivered, assembled, lifted, reconfigured, and lifted some more. The two-week round-robin of sorts started with a Deisobutanizer near Robstown, TX with our Manitowoc 16000. Some of the crew stayed on site to set up the crane pad for the next lift, a Demethanizer weighing over one million pounds. Over the weekend, our lead tech and other crew members built up a Liebherr LR1600 in Orla, TX to lift a Amine Contactor and Demethanizer over the course of 3 days. A few days later, the crew reconfigured the crawler cranes on site in Mentone, TX for another set of Demethanizer and Amine Contactor units. The million-pound pick was completed with a Demag CC6800 in partnership with Sarens USA and our Manitowoc 16000. It was soon followed by a third Amine Contactor pick. Our team members were recognized at our quarterly safety meeting for their hard work, safe practices, and quality performance. Mountain Crane had boots on the ground from the very beginning, with job walks beginning over a year ago. Several conference calls, lift plans, and project meetings later, we are happy to share a job well done with our customers.



A RACE AGAINST TIME & MOTHER NATURE

With a big storm in the forecast and safety protocol for the adjacent hospital, time was of the essence on this job. Crews worked around the clock to get these panels set safely & efficiently. We set a total of 36 panels some reaching 72' tall and weighing 140,000 lbs.



MOVING A MISSILE LAUNCHER ●●●●

Utilizing our Kenworth T800, 10 lines of THP Goldhofer, our Liebherr 275 ton AT crane, and 200 ton AT crane, we recently transported this 190,000 lb mobile missile launcher to a new area where it will eventually be a display piece. This cold war relic hasn't moved in years. This was a fun and unique project to get it rolling again. Congrats to our team for a job well done!



MOUNTAIN STRONG



The core of Mountain is a top notch crew who is committed to SAFETY and executing every job with professionalism and precision. We are proud to be Mountain strong.





NOVEMBER CONTEST:

- Two Courtside Tickets
- Game TBD



CLICK HERE TO WIN!

CONTACT US

-  393 S Monterey St. Salt Lake City, UT 84104
-  www.mountaincrane.com
-  [@mountaincrane](https://www.instagram.com/mountaincrane)
-  801.282.3330

