



M MOUNTAIN

JUNE 2019

TOP NEWS INSIDE

- Spring Construction- 02
- Panel support - 03
- Transport - 03
- CONTEST PAGE - 04

ENTER TO WIN!!!!



GOLF PACKAGE!

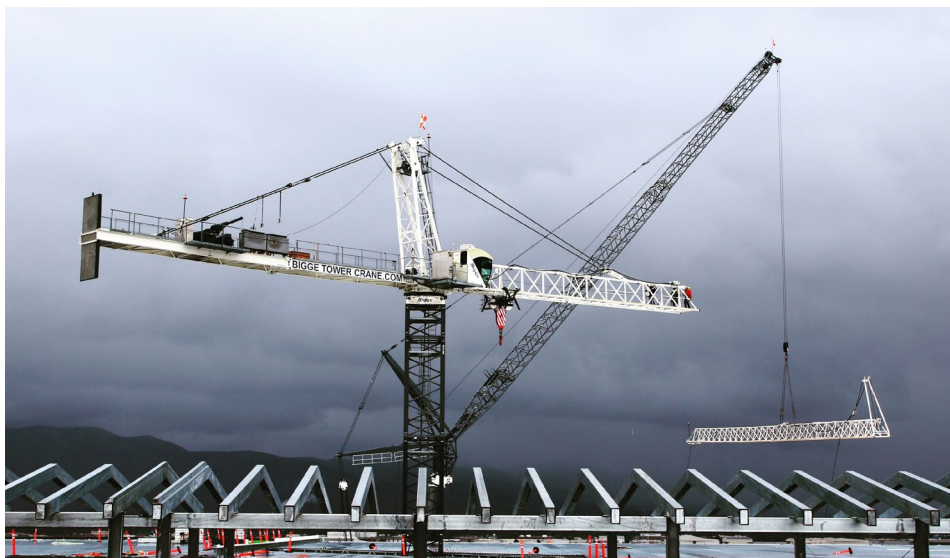
WELCOME TO THE FLEET!



Mountain recently received one of two Liebherr LR 11000 crawler cranes. This behemoth has a capacity of more than 2.2 million pounds and a maximum hoist height of 728 feet. Look for more pictures and jobs to come in future newsletters!



Spring Fling!



The spring construction rush is upon us! This time of year brings all types of weather. Some days start out with freezing temps and by afternoon it's t-shirt weather. Other days we deal with wind delays and mud bogs. Regardless of the conditions our job is to make for a safe and productive work environment. Enjoy these photos of our great team & partners getting the job done in all conditions. Bring on summer!





IT'S GOOD TO BE FLEXIBLE

Wet noodle or 3,000 lb support beam?! We recently hoisted a slew of these 67 ft, flexible beams which were placed inside the walls of a four story tilt panel.



“ MOUNTAIN HEAVY TRANSPORT



Our crane and heavy haul divisions teamed up to make this job an easy and successful process for our customer. We recently delivered and placed this 119,050 lb transformer in Randolph, Utah.



MOUNTAIN STRONG



The core of Mountain is a top notch crew who is committed to SAFETY and executing every job with professionalism and precision. We are proud to be Mountain strong.





JUNE CONTEST: GOLF PACKAGE!



- Taylormade Driver and a \$50 gift card to Top Golf!

CLICK HERE TO WIN!

CONTACT US

-  393 S Monterey St. Salt Lake City, UT 84104
-  www.mountaincrane.com
-  @mountaincrane
-  801.282.3330

MOUNTAIN