

In This Issue:

## Two Crane Trip

+ 02

+ Tilt Panels: 04

+ Contest Page: 05



## A Top Notch Mountain Team



We take pride in providing the most qualified and trained professionals for every job site. From their apprenticeship and continuing education, each member of our crew is ready to get the job done safely.

## Enter to Win!



+ 05





## Tripping the Truck Bed

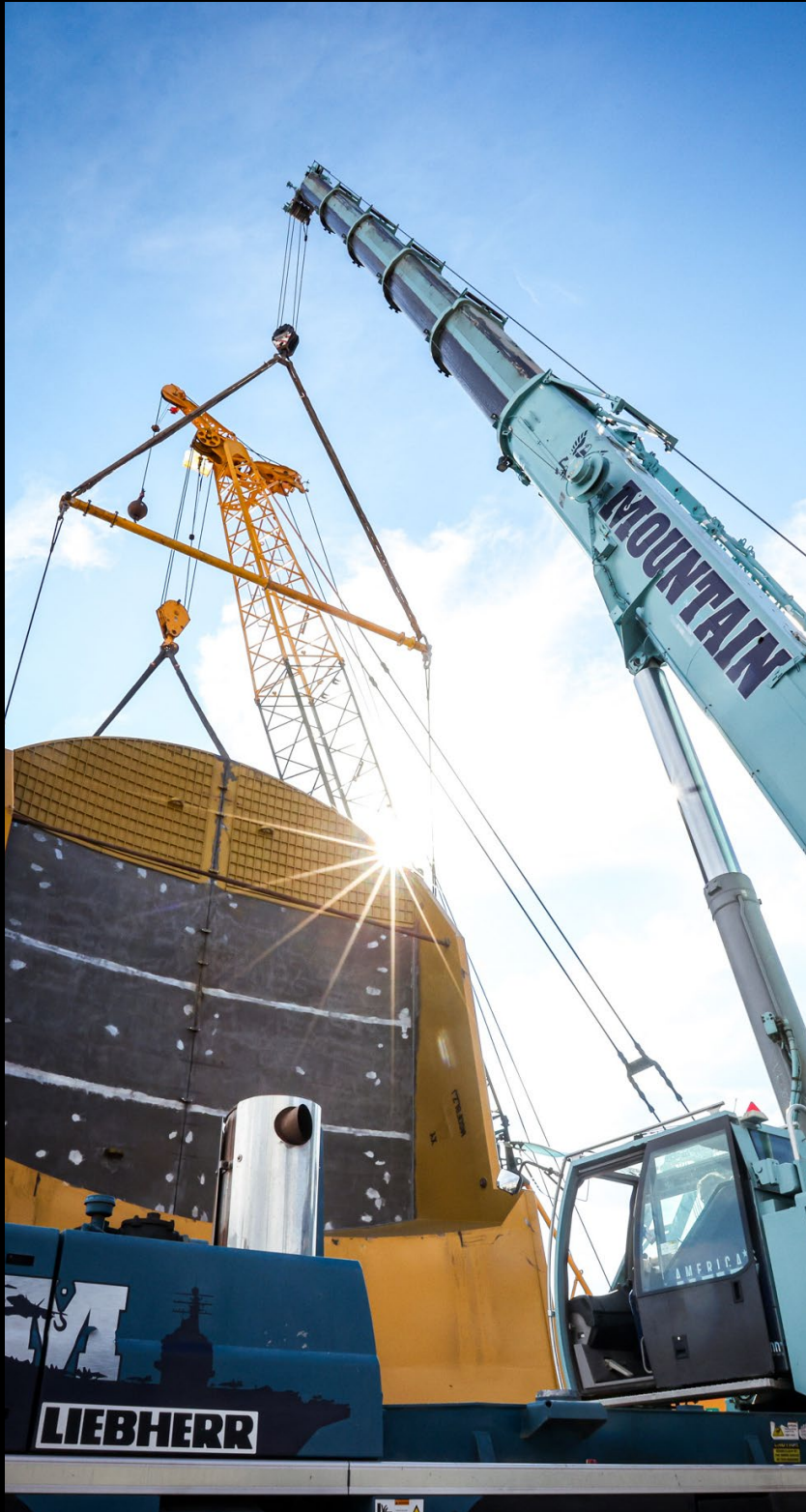


Have a truck bed that's 30 feet wide? These massive industrial truck beds, which are typically used in the mining industry, are so massive they have to be shipped



in two sections. After arriving in two halves, they are fit together and welded, then flipped to weld the opposite side. Mountain utilized a Manitowoc 555 crawler crane and a Liebherr LTM 1220 hydraulic crane to trip the bed and allow the welders to work their magic. Whether it's at the pit or at the fab shop, Mountain is proud to support the mining industry.

# 30 Foot Wide, 320 Ton Truck Bed

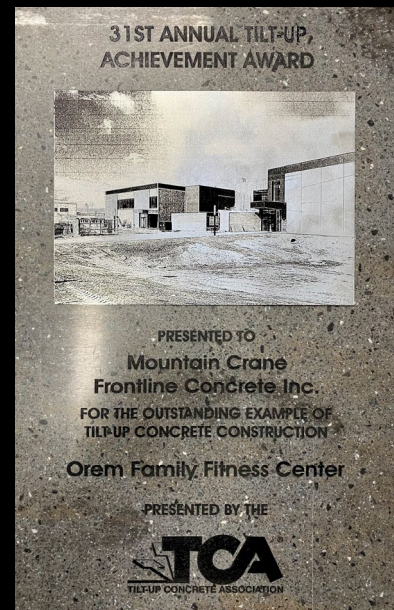


## “TRIPPING” OR FLIPPING?

With safety at the forefront of our minds in the construction industry, it seems the word “tripping” would be a bad thing. If it involves falling down, it most definitely is a bad thing, but if it means hoisting a large object and laying it horizontally, it’s also called “tripping”. When done safely by crane professionals, it’s a good thing.







## Never Tired of the Tilt

Mountain has a long history of tilting precast panels across the Western US. We are honored to be recognized by the Tilt-UP Concrete Association for an "Outstanding Example of Tilt-Up Concrete Construction".

Over the last 12 months, Mountain has completed 75 tilt projects in various states. When you're ready to start tilting, call the pros!

## Upcoming Wind Convention in Salt Lake City, UT

American Clean Energy Conference Dec. 7th & 8th



American Clean Energy will host its annual convention December 7th and 8th in Salt Lake City. We are looking forward to attending the conference with our associates from across the wind industry in our home town. If you'd you'll be at the conference and would like to learn more about the events Mountain is hosting, please contact us at: [info@mountaincrane.com](mailto:info@mountaincrane.com)




The core of Mountain is a top notch crew who is committed to SAFETY and executing every job with professionalism and precision. We are proud to be Mountain strong.



## Click to Win!

### October Contest

 Mountain Jacket

## CONTACT US

 393 S. Monterey St.  
Salt Lake City, UT 84104

 [www.mountaincrane.com](http://www.mountaincrane.com)

 @mountaincrane

 801.282.3330

