

## In This Issue:

# The LR 11000

+ 02

+ Safety Strong: 04

+ Big HVAC pick: 04

+ Contest Page: 05



## Looking Back Fall 2017 ...

Our crew was honored to be a part of the major renovation at Vivint Arena, home of the Utah Jazz.

Go Jazz!

+ 05

## Enter to Win!



Carhartt Coat





## A Maintenance Machine!



A Titan in the crane industry, the Liebherr LR 11000 has proven to be an invaluable tool in our fleet. The LR 11000 has an impressive max hoist height of 220 meters, a max load capacity of 1,000 tons and a max radius of 184 meters. These abilities and its dynamic versatility have made it an instrumental tool for several of our wind maintenance projects. Recently, one of our wind O&M clients came to us with a challenge. They needed to remove a damaged wind turbine rotor.

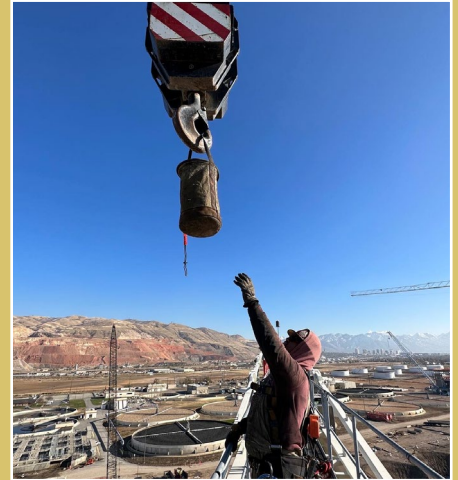


# BIGGER, TALLER, STRONGER!



Due to the extent of the damage, the rotor could only be salvaged if the entire rotor with blades could be removed with the main shaft still attached. The hub was 108 meters in the air and weighed approximately 312,000 lbs. This had never been done before and the alternative option would be to demolish the entire turbine. In partnership with the O&M client, our team successfully engineered and executed this challenging lift plan. Accomplishing this task for the first time in the world sets Mountain apart in the wind maintenance industry

## LUNCH IS DELIVERED!



Who needs Grubhub when you can have a 900 ton crane deliver your lunch? Our Tower Team knows how to get the job done, whether is a big lift or getting lunch delivered 200 feet in the air!







## Bringing The Big Reach

Our Liebherr LTM1400 recently brought the big reach as it set multiple air handling units for MSS Mechanical in Sandy, Utah. With Roy in the cab of this 500 ton all terrain configured with 152 ft. main boom and 230 ft. of luffer, the heaviest pick was set 15,000 lbs. at a lift radius of 270 feet. Great work to our engineers and General Construction team.



## Safety Strong, Safety Share

"Be your brother's keeper. If you see something being done that is unsafe or incorrect, stop and teach. Ensure the future leaders of our industry are trained properly. Your skill and knowledge could be a blessing to someone new to the industry."

Devin Norager, Site Manager



The core of Mountain is a top notch crew who is committed to SAFETY and executing every job with professionalism and precision. We are proud to be Mountain strong.



## Click to Win!

### November Contest

+ Carhartt Coat

## CONTACT US

393 S. 2650 West  
Salt Lake City, UT 84104

www.mountaincrane.com

@mountaincrane

801.282.3330

